

## Fixed Mount Type Infrared Thermal Imager Thermo Tracer TS9260/TS9230

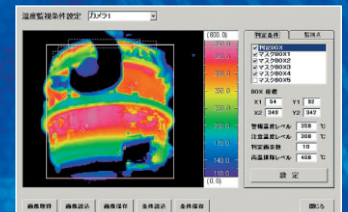
FA / Production line / Security for High performance Infrared thermography



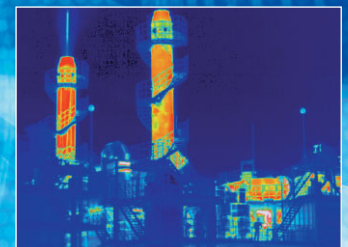
**TS9260**



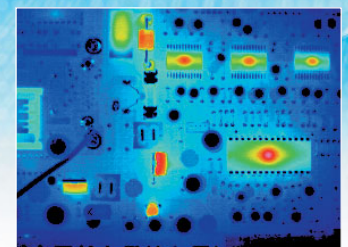
**TS9230**



For Production line



For security



For Production control

### NEC UFPA detector built in (Made in Japan)

TS9260: High resolution 640×480  
TS9230: High performance 320×240

### Basic performance

NETD: 0.08°C@30°C  
Accuracy: ±2%(Reading) or ±2°C

### Compact & light weight

TS9260: 80×87×211mm 1.2kg  
TS9230: 65×65×208mm 1.0kg  
(At 21° manual lens)

### Toughness & high reliability

Dust & splash proof, IP54  
Rugged metal case,  
Long-term continuous operation  
with high and reliable design.

### Easy maintenance

High reliability UFPA detector and  
optimization of moving mechanism  
for easy maintenance

### Ethernet & IEEE1394

Easy connection to PC□  
Real time image transfer and  
various system-up are available by  
high speed data transfer

### Alarm output

Detects abnormal condition and  
outputs by itself. It makes cost  
down for the system

### High cost performance

Optimizes necessary performance  
for each application and realizes  
high cost performance

### Rich options

Protection housing, lenses  
interfaces, peripherals,  
software development kit etc.